



**Government of India  
Ministry of Earth Sciences  
India Meteorological Department**



**Press Release**

**Date: 29<sup>th</sup> July, 2025**

**Time of Issue: 1330 hours IST**

**Subject: i) Heavy to very heavy rainfall likely over East Rajasthan and Madhya Pradesh during 29<sup>th</sup>-31<sup>st</sup> with isolated extremely heavy falls over West Madhya Pradesh on 29<sup>th</sup> July, 2025.  
ii) Heavy to very heavy rainfall likely to continue over Arunachal Pradesh, Assam and Meghalaya during next 7 days with increased activity from 01<sup>st</sup> August.  
iii) Decrease in rainfall activities over south peninsula during next 6-7 days and over central India from 1<sup>st</sup> August, 2025.**

**Realised weather during past 24 hours till 0830 hours IST of today, the 29<sup>th</sup> July, 2025:**

- ❖ **Extremely heavy falls ( $\geq 21$  cm)** has been recorded at isolated places over West Madhya Pradesh and Himachal Pradesh.
- ❖ **Heavy to very heavy rainfall (7-20 cm)** has been recorded at isolated places over East Rajasthan, Punjab, East Madhya Pradesh, Bihar, Jharkhand, Sub-Himalayan West Bengal & Sikkim, Mizoram; **Heavy rainfall (7-11 cm)** at isolated places over ghat areas of Madhya Maharashtra, Uttarakhand, Uttar Pradesh, Haryana, Gujarat Region, Gangetic West Bengal, Assam and Arunachal Pradesh.

**For more details of realised weather, kindly refer [Annexure I](#).**

**i. Weather Systems, Forecast and Warnings (refer to Annexure II & III):**

- ❖ The monsoon trough runs near to its normal position at mean sea level.
- ❖ Yesterday's **low Pressure area** over northwest Madhya Pradesh & adjoining east Rajasthan now lay over northwest Madhya Pradesh & neighbourhood at 0830 hrs IST of today, the 29<sup>th</sup> July, 2025.
- ❖ A trough runs from the northeast Arabian Sea to south Bangladesh in lower tropospheric levels.
- ❖ An upper air cyclonic circulation lies over south Punjab & adjoining Pakistan and another over northwest Uttar Pradesh & neighbourhood in lower tropospheric levels.
- ❖ An upper air cyclonic circulation lies over south Gangetic west Bengal & neighbourhood in middle tropospheric levels.
- ❖ A Western Disturbance as a trough in middle tropospheric level runs roughly along Long. 70°E to the north of Lat. 31°N.

Under the influence of these systems, the following weather is likely:

**Northwest India:**

- ✓ **Isolated very heavy rainfall over East Rajasthan during 29<sup>th</sup>-31<sup>st</sup>; Himachal Pradesh on 29<sup>th</sup> & 30<sup>th</sup>; West Uttar Pradesh, and Jammu & Kashmir on 29<sup>th</sup> July.**
- ✓ **Isolated heavy rainfall** likely over Uttarakhand, Himachal Pradesh during 29<sup>th</sup> July-04<sup>th</sup> August; Jammu and Kashmir during 29<sup>th</sup>-31<sup>st</sup>; Uttar Pradesh on 29<sup>th</sup>, 30<sup>th</sup> July, 03<sup>rd</sup> & 04<sup>th</sup> August; Punjab, Haryana & Chandigarh on 29<sup>th</sup> July, 03<sup>rd</sup> & 04<sup>th</sup> August; East Rajasthan on 01<sup>st</sup> & 02<sup>nd</sup> August and West Rajasthan on 30<sup>th</sup> & 31<sup>st</sup> July.
- ✓ **Light/moderate rainfall** at many places accompanied with thunderstorm, lightning likely over Western Himalayan region and some places over the plains during next 7 days.

#### West India:

- ✓ Isolated **heavy rainfall** likely over Gujarat region on 29<sup>th</sup>; Konkan, Ghat areas of Madhya Maharashtra on 29<sup>th</sup> & 30<sup>th</sup> July with isolated **very heavy rainfall** over Ghat areas of Madhya Maharashtra on 29<sup>th</sup> July.
- ✓ Light to moderate rainfall at many places very likely over the region during next 6-7 days.

#### Northeast India:

- ✓ Light/moderate rainfall at many places accompanied with **thunderstorm, lightning and isolated heavy rainfall** likely to continue over Arunachal Pradesh, Assam & Meghalaya and Nagaland, Manipur, Mizoram & Tripura during 29<sup>th</sup> July-04<sup>th</sup> August with increased activity from 01<sup>st</sup> August.

#### East & Central India:

- ✓ **Extremely heavy rainfall** very likely at isolated places over West Madhya Pradesh on 29<sup>th</sup> July.
- ✓ Isolated **heavy rainfall** likely over Madhya Pradesh during 29<sup>th</sup>-31<sup>st</sup>; Vidarbha, Odisha on 29<sup>th</sup>; Sub-Himalayan West Bengal & Sikkim, Bihar during 29<sup>th</sup> July-04<sup>th</sup> August; Jharkhand, Gangetic West Bengal, Chhattisgarh on 29<sup>th</sup> & 30<sup>th</sup> July with isolated **very heavy rainfall** over Gangetic West Bengal, East Madhya Pradesh on 29<sup>th</sup>; Bihar on 29<sup>th</sup> & 30<sup>th</sup>; West Madhya Pradesh on 30<sup>th</sup>; Sub-Himalayan West Bengal & Sikkim during 02<sup>nd</sup>-04<sup>th</sup> August.
- ✓ Light to moderate rainfall at most/many places accompanied with thunderstorm, lightning & gusty winds (speed reaching 30-40 Kmph) likely over the region during next 5 days.

#### South Peninsular India:

- ✓ **Strong surface winds** (speed reaching 40-50 kmph) very likely over South Peninsular India during next 3 days.
- ✓ Light to moderate rainfall at some/many places over Kerala & Mahe, Lakshadweep, Karnataka, Rayalaseema, Coastal Andhra Pradesh & Yanam and Telangana during next 7 days.

#### Fishermen warning:

**Fishermen are advised to avoid venturing into the following from 29<sup>th</sup> July to 03<sup>rd</sup> August 2025 to the following Areas:**

- ❖ **Arabian Sea:** Along and off Gujarat, Konkan & Goa coasts and adjoining sea areas; ; Entire central Arabian Sea during 29<sup>th</sup> July to 02<sup>nd</sup> August; Karnataka coast and adjoining sea areas on 29<sup>th</sup>, 30<sup>th</sup> July & 02<sup>nd</sup> August; Kerala coast and adjoining sea area during 29<sup>th</sup> to 31<sup>st</sup> July; many parts of southeast & adjoining southwest Arabian Sea for 29<sup>th</sup> July, some parts of southeast and adjoining southwest Arabian Sea during 30<sup>th</sup> July to 03<sup>rd</sup> August; most parts of central Arabian Sea on 02<sup>nd</sup> August; southern parts of north Arabian Sea along and off the Somalia coast and adjoining sea areas, south Oman and adjoining Yemen coast & adjoining sea areas during 29<sup>th</sup> July to 03<sup>rd</sup> August.
- ❖ **Bay of Bengal:** Along and off North Andhra Pradesh coast during 29<sup>th</sup> July; many parts of westcentral Bay of Bengal during & adjoining areas of southwest & eastcentral Bay of Bengal during 29<sup>th</sup> to 31<sup>st</sup> July; some northern parts of central and adjoining north Bay of Bengal for 31<sup>st</sup> July; some parts of southwest Bay of Bengal during 31<sup>st</sup> July to 03<sup>rd</sup> August; Over Gulf of Mannar during 29<sup>th</sup> July and 03<sup>rd</sup> August.

#### ii. Weather conditions and forecast over Delhi/NCR during 29<sup>th</sup> July to 01<sup>st</sup> August, 2025 (Annexure IV)

**For more details, kindly refer National Weather Bulletin:**

[https://mausam.imd.gov.in/responsive/all\\_india\\_forecast\\_bulletin.php](https://mausam.imd.gov.in/responsive/all_india_forecast_bulletin.php)

**For District wise warnings refer:** <https://mausam.imd.gov.in/responsive/districtWiseWarningGIS.php>

**Rainfall recorded (in cm) during past 24 hours till 0830 hours IST of today, the 29<sup>th</sup> July:**

**Himachal Pradesh:** Sandhole (Mandi)-21; Mandi (dist Mandi) 20; Pandoh (dist Mandi) 12; Kataula (dist Mandi) 9; Nadaun (dist Hamirpur), Una (dist Una), Dehra Gopipur (dist Kangra), Gohar (dist Mandi), Barthin (dist Bilaspur), Sujampur Tira (dist Hamirpur) 7 Each;

**West Madhya Pradesh:** Chachoda (dist Guna) 20; Bareli (dist Raisen) 16; Udaipura (dist Raisen), Biaora (dist Rajgarh), Maksudangarh (dist Guna) 15 Each; Badi (dist Raisen) 13; Raisen-aws (dist Raisen), Raghogarh (dist Guna) 12 Each; Begumganj (dist Raisen), Lateri (dist Vidisha), Karhal (dist Sheopur) 11 Each; Alirajpur (dist Alirajpur), Kathiwada (dist Alirajpur), Bankhedi (dist Narmadapuram), Deori (dist Raisen) 10 Each; Pachmarhi (dist Narmadapuram), Goharganj (dist Raisen), Sultanpur (dist Raisen) 9 Each; Narsingarh (dist Rajgarh), Rajgarh (dist Rajgarh), Bhopal Arera Hills (dist Bhopal), Shamshabad (dist Vidisha) 8 Each; Bairagarh Airport (dist Bhopal), Salwani (dist Raisen), Khilchipur (dist Rajgarh), Vidisha (dist Vidisha), Bhimpur (dist Betul), Berasia (dist Bhopal), Zirapur (dist Rajgarh), Kolar (dist Bhopal) 7 Each;

**Bihar:** Danapur (dist Patna) 18; Patna Aerodrome (dist Patna) 17; Phulwari Sharif (dist Patna) 16; Sampatchak (dist Patna) 14; Daniawan (dist Patna) 13; Lalbegiaghat (dist East Champaran), Dhengbridge (dist Sitamarhi), Punpun (dist Patna), Bhagwanpur Hat (dist Siwan), Kamtaul (dist Darbhanga) 11 Each; Sripalpur (dist Patna), Karai Parsurai (dist Nalanda), Hilsa (dist Nalanda), Bidupur (dist Vaishali) 10 Each; Bairganja (dist Sitamarhi), Shambhuganj (dist Banka), Chakai (dist Jamui), Giryak (dist Nalanda), Agiaon (dist Bhojpur), Garhani (dist Bhojpur), Parbalpur (dist Nalanda), Raghupur (dist Vaishali), Bihar Shrif (dist Nalanda) 9 Each; Sarmera (dist Nalanda), Asthawan (dist Nalanda), Rahui (dist Nalanda), Dhanarua (dist Patna), Kargahar (dist Rohtas), Rosera (dist Samastipur) 8 Each; Samastipur (dist Samastipur), Fatuha (dist Patna), Pachdeuri (dist Gopalganj), Maner (dist Patna), Naubatpur (dist Patna), Kahara (dist Saharsa) 7 Each;

**Jharkhand:** Purvi Tundi (dist Dhanbad) 17; Karmatand (dist Jamtara) 15; Narayanpur (dist Jamtara), Tundi (dist Dhanbad) 14 Each; Giridih (dist Giridih) 12; Gobindpur Dvc (dist Dhanbad), Nala (dist Jamtara), Kundahit (dist Jamtara) 11 Each; Madhupur (dist Deoghar), Sikatia (dist Deoghar), Fatehpur (dist Jamtara) 10 Each; Maithon (dist Dhanbad), Maithon Dvc (dist Dhanbad) 8 Each; Gobindpur (dist Dhanbad), Nandadih (dist Giridih), Jamtara Fmo (dist Jamtara), Palganj (dist Giridih) 7 Each;

**Punjab:** Ropar (dist Rupnagar) 16; Gurudaspur (dist Gurdaspur) 14; Tibri (dist Gurdaspur), Gurdaspur AMFU (dist Gurdaspur) 10 Each; Phangota (dist Pathankot), Ballawal Saunkri (dist Sbs Nagar), Ghanauli (dist Rupnagar) 9 Each; Balachaur AWS (dist Sbs Nagar), Dhariwal Irr (dist Gurdaspur) 8 Each;

**Sub Himalayan West Bengal & Sikkim:** Namthang (dist Namchi) 15; Rongli (dist Pakyong) 13; Tadong (dist Gangtok), Gangtok (dist Gangtok), Pakyong (dist Pakyong), Mangan (dist Mangan) 12 Each; Damthang (dist Namchi), Ravangla ARG (dist Namchi) 10 Each; Gyalsing PTO (dist Gyalshing) 9; Lava (dist Kalimpong) 7;

**East Madhya Pradesh:** Kareli (dist Narsinghpur) 11; Narsinghpur-aws (dist Narsinghpur) 10; Gadarwara (dist Narsinghpur), Tendukheda (dist Narsinghpur), Rahatgarh (dist Sagar) 8 Each; Bargi (dist Jabalpur) 7;

**East Uttar Pradesh:** Mohammedabad ( Y ) (dist Ghazipur) 11; Chhibramau (dist Kannauj) 9; Tirwa (dist Kannauj), Hata (dist Kushi Nagar) 8 Each; Birdghat (dist Gorakhpur), Gorakhpur (dist Gorakhpur) 7 Each;

**East Rajasthan:** Atru SR (dist Baran) 11; Chipabarod SR (dist Baran) 10; Chabra (dist Baran) 9; Lalsot (dist Dausa) 8; Jaipur AP (dist Jaipur), Bijoliya SR (dist Bhilwara), Bakani SR (dist Jhalawar), Sanganer Tehsil SR (dist Jaipur), Kishanganj (dist Baran), Chaksu (dist Jaipur) 7 Each; **Gangetic West Bengal:** Contai (dist East Midnapore), Barrackpur( Iaf) (dist North 24 Parganas) 10 Each; Rampurhat (DRMS) (dist Birbhum), Tilpara Barrage (dist Birbhum), Amta (dist Howrah) 9 Each; Canning (dist South 24 Parganas) 8; Alipore (dist Kolkata) 7;

**Gujarat Region:** Umerpada (dist Surat) 9; Chhota Udepur (dist Chhota Udepur) 8; Bodeli (dist Chhota Udepur) 7;

**Assam & Meghalaya:** D/Mohanbari AP (dist Dibrugarh), Mohanbari AWS (dist Dibrugarh) 9 Each;

**Madhya Maharashtra:** Mahabaleshwar (dist Satara), Radhanagari (dist Kolhapur), Shahuwadi (dist Kolhapur), Igatpuri (dist Nashik) 7 Each;

**Haryana:** Kanina (dist Mahendragarh), Jagadhari (dist Yamuna Nagar) 7 Each;

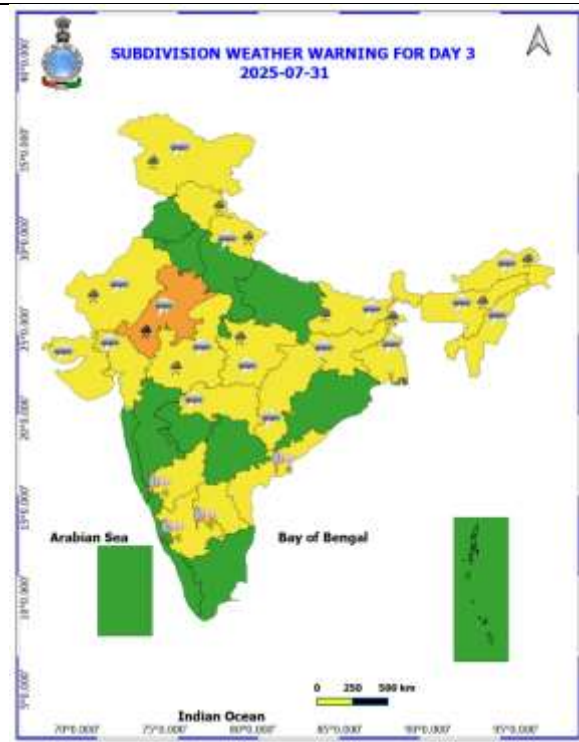
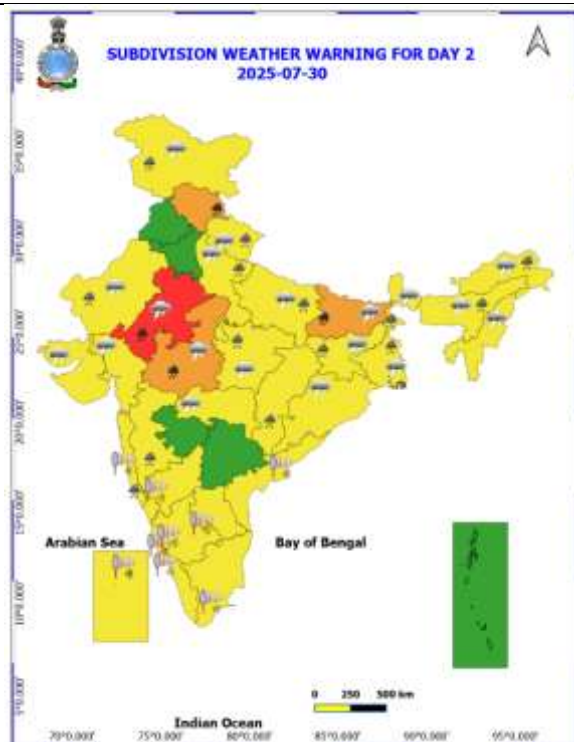
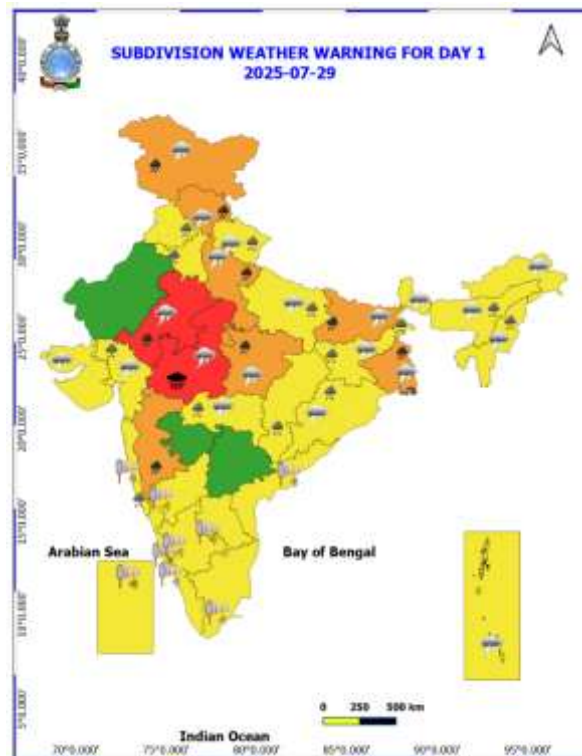
**Uttarakhand:** Jollygrant (dist Dehradun) 7;

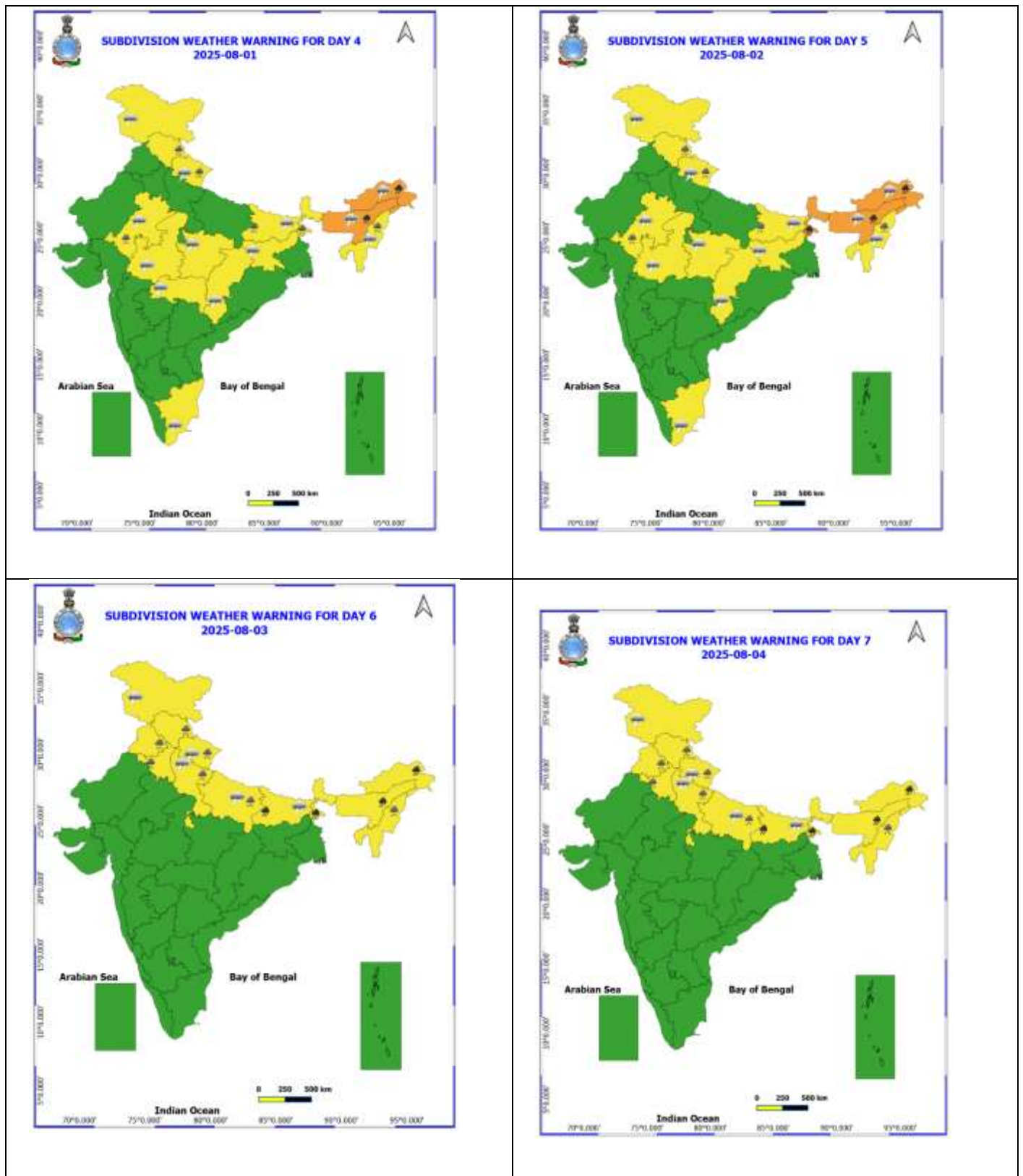
**West Uttar Pradesh:** Dhampur (dist Bijnor) 7.

Table-1								
7 Days Rainfall Forecast								
S.No.	Subdivision	29- Jul	30- Jul	31- Jul	1- Aug	2- Aug	3- Aug	4- Aug
		Day 1	Day 2	Day 3	Day 4	Day 5	Day 6	Day 7
1	ANDAMAN & NICOBAR ISLANDS	FWS	SCT	FWS	FWS	WS	WS	FWS
2	ARUNACHAL PRADESH	FWS	FWS	FWS	WS	WS	WS	WS
3	ASSAM & MEHGHALAYA	FWS	FWS	FWS	FWS	WS	WS	WS
4	NAGALAND, MANIPUR, MIZORAM AND TRIPURA	FWS	FWS	FWS	FWS	FWS	WS	WS
5	SUB HIMALAYAN WEST BENGAL & SIKKIM	WS	WS	WS	WS	WS	WS	WS
6	GANGETIC WEST BENGAL	WS	WS	WS	FWS	FWS	FWS	FWS
7	ODISHA	FWS	SCT	ISOL	ISOL	ISOL	ISOL	ISOL
8	JHARKHAND	WS	FWS	SCT	SCT	SCT	SCT	FWS
9	BIHAR	WS	FWS	FWS	SCT	SCT	FWS	FWS
10	EAST UTTAR PRADESH	FWS	FWS	SCT	ISOL	SCT	FWS	FWS
11	WEST UTTAR PRADESH	FWS	FWS	SCT	SCT	SCT	SCT	SCT
12	UTTARAKHAND	WS	FWS	FWS	FWS	FWS	WS	WS
13	HARYANA, CHANDIGARH & DELHI	FWS	SCT	SCT	SCT	SCT	SCT	SCT
14	PUNJAB	FWS	SCT	ISOL	SCT	SCT	SCT	SCT
15	HIMACHAL PRADESH	WS	WS	FWS	FWS	FWS	FWS	WS
16	JAMMU AND KASHMIR AND LADAKH	FWS	WS	FWS	SCT	SCT	ISOL	SCT
17	WEST RAJASTHAN	ISOL	SCT	FWS	SCT	SCT	ISOL	ISOL
18	EAST RAJASTHAN	FWS	WS	WS	FWS	SCT	SCT	ISOL
19	WEST MADHYA PRADESH	WS	WS	FWS	FWS	SCT	SCT	SCT
20	EAST MADHYA PRADESH	WS	WS	FWS	FWS	FWS	SCT	SCT
21	GUJRAT REGION	FWS	FWS	FWS	SCT	SCT	SCT	SCT
22	SAURASHTRA & KUTCH	SCT	SCT	SCT	SCT	SCT	SCT	SCT
23	KONKAN & GOA	WS	WS	WS	WS	FWS	FWS	FWS
24	MADHYA MAHARASHTRA	FWS	FWS	SCT	ISOL	ISOL	ISOL	ISOL
25	MARATHWADA	SCT	ISOL	ISOL	ISOL	ISOL	ISOL	ISOL
26	VIDARBHA	WS	WS	FWS	SCT	SCT	SCT	SCT
27	CHHATTISGARH	WS	FWS	SCT	SCT	SCT	SCT	SCT
28	COASTAL ANDHRA PRADESH	ISOL	ISOL	ISOL	ISOL	ISOL	ISOL	ISOL
29	TELANGANA	ISOL	ISOL	ISOL	ISOL	ISOL	ISOL	ISOL
30	RAYALASEEMA	ISOL	ISOL	ISOL	ISOL	ISOL	ISOL	ISOL
31	TAMILNADU & PUDUCHERRY	ISOL	ISOL	ISOL	SCT	SCT	SCT	SCT
32	COSTAL KARNATAKA	WS	WS	WS	WS	WS	WS	WS
33	NORTH INTERIOR KARNATAKA	ISOL	ISOL	ISOL	ISOL	ISOL	ISOL	ISOL
34	SOUTH INTERIOR KARNATAKA	SCT	SCT	ISOL	ISOL	SCT	SCT	SCT
35	KERALA AND MAHE	FWS	FWS	FWS	FWS	WS	WS	WS
36	LAKSHADWEEP	FWS	FWS	FWS	FWS	FWS	FWS	FWS

- As the lead period increases forecast accuracy decrease.







- Action may be taken based on ORANGE AND REDCOLOUR warnings.
- Vulnerable regions likely urban and hilly areas action may be initiated for heavy rainfall warning.
- As the lead period increases forecast accuracy decreases.

Detailed districtwise Multi Hazard weather warning for next five days available at <https://mausam.imd.gov.in/responsive/districtWiseWarningGIS.php>

**Weather forecast over Delhi/NCR during 29<sup>th</sup> July to 01<sup>st</sup> August 2025****Past Weather:**

There has been fall in the minimum temperature up to 1 - 2°C and fall in the maximum temperature up to 1 - 2°C over Delhi/NCR during the past 24 hours. The maximum and minimum temperatures over Delhi were around 35 to 36°C and 25 to 27°C respectively. The minimum temperatures and the maximum temperatures were near normal. Partly cloudy sky conditions with predominant surface wind from the southeast/northeast direction with wind speeds up to 16 kmph prevailed during the past 24 hours. Very light to light rainfall has been recorded in most places with isolated places moderate rainfall over Delhi. Generally cloudy sky conditions with a windspeed of less than 06 kmph from the northwest direction prevailed over the region in the forenoon today.

**Weather Forecast:**

**29.07.2025:** Generally cloudy sky. Light to moderate rain at most places and heavy rain at isolated places accompanied with thunderstorms/lightning. The maximum temperatures over Delhi are likely to be in the range of 29 to 31°C. The maximum temperature will be near normal up to 3 to 5°C. The predominant surface wind will likely be from the southeast direction with a wind speed of less than 20 kmph in the afternoon. The wind speed will gradually decrease becoming 15 kmph from the southeast direction during the evening and night.

**30.07.2025:** Generally cloudy sky. Light to moderate rain accompanied with thunderstorms/lightning. The maximum and minimum temperatures over Delhi are likely to be in the range of 30 to 32°C and 23 to 25°C respectively. The minimum temperature will be below normal up to 1 to 3°C and the maximum temperature will be below normal up to 3 to 5°C. The predominant surface wind will likely be from the southeast direction with a wind speed of less than 15 kmph during the morning hours. The wind speed will gradually increase becoming less than 18 kmph from the southeast direction in the afternoon. It will decrease becoming less than 12 kmph from the southeast direction during the evening and night.

**31.07.2025:** Generally cloudy sky. Light to moderate rain accompanied with thunderstorms/lightning. The maximum and minimum temperatures over Delhi are likely to be in the range of 30 to 32°C and 24 to 26°C respectively. The minimum temperature will be below normal by 1 to 2°C, and the maximum temperature will be below normal by 2 to 4°C. The predominant surface wind will likely be from the southeast direction with a wind speed of less than 15 kmph during the morning hours. The wind speed will gradually increase becoming less than 18 kmph from the southeast direction in the afternoon. It will decrease becoming less than 10 kmph from the southeast direction during the evening and night.

**01.08.2025:** Partly cloudy sky. Very light to light rain accompanied with thunderstorms/lightning. The maximum and minimum temperatures over Delhi are likely to be in the range of 33 to 35°C and 25 to 27°C respectively. The minimum temperature will be below normal by 1 to 2°C, and the maximum temperature will be below normal by 1 to 2°C. The predominant surface wind will likely be from the southeast direction with a wind speed of less than 10 kmph during the morning hours. The wind speed will gradually increase becoming less than 12 kmph from the southwest direction in the afternoon. It will increase becoming less than 15 kmph from the northwest direction during the evening and night.

**Impact expected and Action Suggested due to light to moderate rainfall with thunderstorm/lightning:**

- Be cautious and take precautionary measures, though there is the likelihood of thunderstorms/lightning.
- Damage to standing crops, Minor to major damage to power and communication lines due to breaking of branches, Partial damage to vulnerable structures due to strong winds, Loose objects may fly.
- People are advised to keep a watch on the weather for worsening conditions and be ready to move to safer places accordingly, stay indoors, close windows & doors and avoid travel if possible, take safe shelters; do not take shelter under trees, do not lie on concrete floors and do not lean against concrete walls, unplug electrical/ electronic appliances, immediately get out of water bodies, keep away from all the objects that conduct electricity.

### Impact & Action Suggested due to

- ✓ **Extremely heavy rainfall** very likely at isolated places over West Madhya Pradesh on 29<sup>th</sup> July.
- ✓ **Isolated very heavy rainfall** over East Rajasthan during 29<sup>th</sup>-31<sup>st</sup>; Himachal Pradesh, Bihar on 29<sup>th</sup> & 30<sup>th</sup>; West Uttar Pradesh, and Jammu & Kashmir, Ghat areas of Madhya Maharashtra, Gangetic West Bengal, East Madhya Pradesh on 29<sup>th</sup>; West Madhya Pradesh on 30<sup>th</sup>; Arunachal Pradesh, Assam & Meghalaya during 01<sup>st</sup>-04<sup>th</sup> August; Sub-Himalayan West Bengal & Sikkim during 02<sup>nd</sup>-04<sup>th</sup> August.

### Impact Expected

- Localized Flooding of roads, water logging in low lying areas and closure of underpasses mainly in urban areas of the above region.
- Occasional reduction in visibility due to heavy rainfall.
- Disruption of traffic in major cities due to water logging in roads leading to increased travel time.
- Minor damage to kutchha roads.
- Possibilities of damage to vulnerable structure.
- Localized Landslides/Mudslides/landslips/mudslips/landsinks/mudsinks.
- Damage to horticulture and standing crops in some areas due to inundation.
- It may lead to riverine flooding in some river catchments (for riverine flooding please visit Web page of CWC)

### Action Suggested

- Check for traffic congestion on your route before leaving for your destination.
- Follow any traffic advisories that are issued in this regard.
- Avoid going to areas that face the water logging problems often.
- Avoid staying in vulnerable structure.

### Agromet advisories for likely impact of Heavy / Heavy to Very Heavy / Extremely Heavy Rainfall

- In **East Rajasthan**, postpone sowing of green gram, pearl millet, cluster bean and sesame till cessation of heavy rains and make arrangement for removal of excess water from already sown fields in **Sub Humid Southern Plain and Aravali Hill Zone** and **Flood Prone Eastern Plain Zone**. In **Southern Humid Plain Zone**, postpone sowing of maize till cessation of heavy rains and ensure proper drainage in cotton and soybean fields to remove excess water. Make provision to drain out excess water from rice nurseries, fields of maize, soybean and black gram in **Southeastern Humid Plain zone** and fields of pearl millet and groundnut in **Semi Arid Eastern Plain Zone**.
- In **Madhya Pradesh**, provide adequate drainage in the fields of soybean and maize in **Malwa Plateau Zone**; rice, maize and soybean in **Kymore Plateau and Satpura Hill Zone**; soybean, rice, maize and pigeon pea in **Vindhyan Plateau Zone**; rice and vegetables in **Bundelkhand Zone**; maize, soybean, cotton, sugarcane and vegetables in **Satpura Plateau Zone**; soybean, maize, cotton and black gram in **Jhabua Hills Zone**; rice, soybean, maize, sugarcane and vegetables in **Central Narmada Valley Zone** and soybean, pigeon pea, cotton and vegetables in **Nimar Valley Zone**. In **Gird Zone**, postpone sowing of pearl millet and make arrangement to drain out excess water in fields of soybean, pigeon pea and transplanted rice.
- In **Gujarat**, make necessary arrangements to drain out excess water from fields of transplanted rice, cotton, pearl millet, pigeon pea, soybean and vegetables in **Middle Gujarat Zone**; sugarcane, rice and vegetables in **South Gujarat Heavy Rainfall Zone** and sugarcane, cotton, pigeon pea, transplanted rice and vegetables in **South Gujarat Zone**.
- In **Maharashtra**, make arrangement to drain out excess water from rice and finger millet fields in **ghat areas of Madhya Maharashtra**.
- In **Uttarakhand**, maintain proper drainage channels in fields of rice in **Bhabar and Tarai Zone**, black gram in **Hill Zone** and rice, barnyard millet, finger millet and cucumber in **Sub Humid SubTropic Zone**.
- In **Himachal Pradesh**, make proper drainage channels in the standing crops like maize, finger millet and vegetable fields. Provide staking to tall and leguminous crops and cucumber vines.
- In **Bihar**, provide adequate drainage in the fields of paddy, Pigeon pea, kharif maize, Okra and plantations in **South Bihar Alluvial Zone**.
- In **Arunachal Pradesh**, harvest matured soybean immediately and store in safer place.



- In **Meghalaya**, avoid sowing of rice in nurseries especially in valley lands. Maintain proper drainage channels around the nursery beds. Make provision for draining out excess water from vegetable fields and repair bunds in lowland paddy fields.
- In **Mizoram**, harvest matured cobs of maize. Create strong bunds around rice fields to retain rainwater and reduce runoff.

#### **Livestock / Fishery**

- Keep the animals inside the shed during heavy rainfall and provide them balanced feed.
- Store feed and fodder in a safe place to prevent spoilage.
- Construct an outlet with proper netting around the ponds to drain out excess water, thereby preventing fish from escaping in case of overflow.

#### **Agromet advisories for likely impact of Thunderstorm / Gusty Winds / Squally Winds**

- Provide mechanical support to horticultural crops and staking or support to vegetables and young fruit plants / fruit-bearing plants to avoid lodging due to strong winds.

## Flash flood guidance:

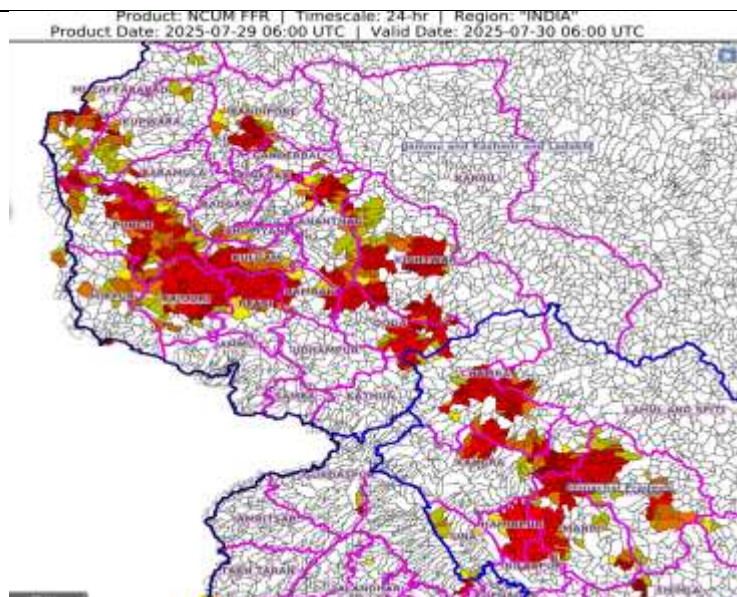
24 hours Outlook for the Flash Flood Risk (FFR) till 1130 IST of 30-07-2025 :

Low to Moderate flash flood risk likely over few watersheds & neighbourhoods of following Met Sub-divisions during next 24 hours.

Himachal Pradesh - Bilaspur, Chamba, Hamirpur, Kangra, Kinnaur, Kullu, Mandi, Shimla and Una districts.

Adjoining Jammu & Kashmir & Ladakh - Anantnag, Badgam, Bandipore, Baramula, Doda, Ganderwal, Kathua, Kistwar, Kulgam, Kupwara, Pulwama, Punch, Rajouri, Ramban, Riasi, Shopian, Mirpur and Muzaffarabad districts.

Surface runoff/ Inundation may occur at some fully saturated soils & low-lying areas over Area of Concern (AoC) as shown in map due to expected rainfall occurrence in next 24 hours.



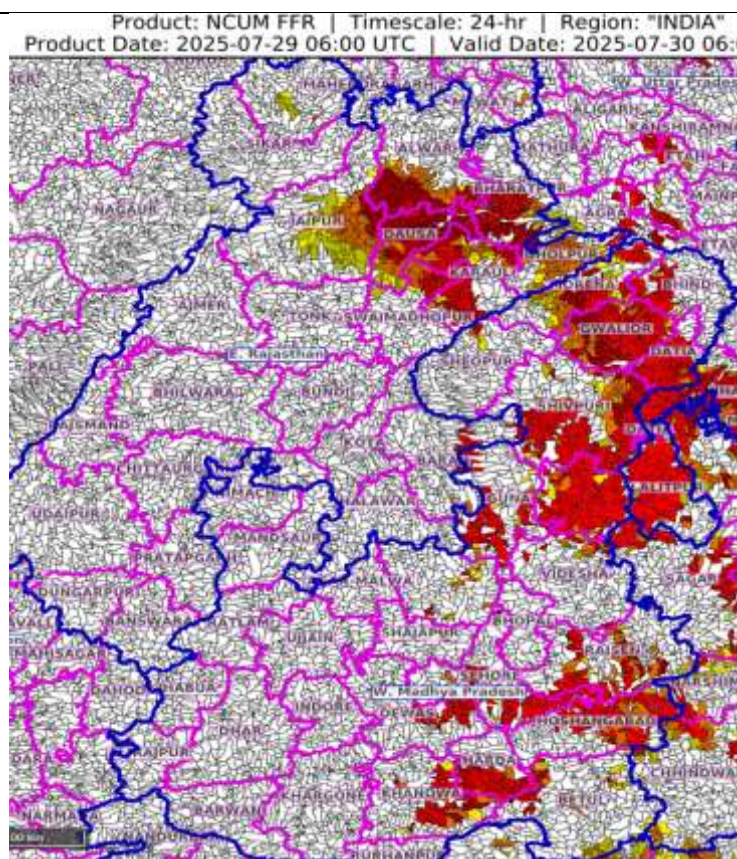
24 hours Outlook for the Flash Flood Risk (FFR) till 1130 IST of 30-07-2025 :

Moderate to High flash flood risk likely over few watersheds & neighbourhoods of following Met Sub-divisions during next 24 hours.

West Madhya Pradesh - Ashoknagar, Betul, Bhind, Datia, Dewas, Guna, Gwalior, Harda, Khandwa, Morena, Narmadapuram, Raisen, Rajgarh, Sehore, Shajapur, Sheopur, Shivpuri and Videsha districts.

Adjoining East Rajasthan - Alwar, Bharatpur, Dausa, Dholpur, Jaipur, Jhunjhunun, Karauli and Swaimadhopur districts.

Surface runoff/ Inundation may occur at some fully saturated soils & low-lying areas over Area of Concern (AoC) as shown in map due to expected rainfall occurrence in next 24 hours.



### **Legends & abbreviations:**

- ❖ **Heavy Rain:**64.5-115.5mm; **Very Heavy Rain:**115.6-204.4mm; **Extremely Heavy Rain:** >204.4mm.
- ❖ **Obsy:** Observatory; Automatic Weather Station; **ARG:** Automatic Rain Gauge; **dist:** District; **NH:** National Highway; **KVK:** Krishi Vigyan Kendra; **DVC:** Damodar Valley Corporation; **PTO:** Part Time Office, **Aero:** Aerodrome, **IAF:** Indian Air Force.
- ❖ **Region wise classification of meteorological Sub-Divisions:**
  - **Northwest India:** Western Himalayan Region (Jammu-Kashmir-Ladakh-Gilgit-Baltistan-Muzaffarabad, Himachal Pradesh and Uttarakhand); Punjab, Haryana-Chandigarh-Delhi; West Uttar Pradesh, East Uttar Pradesh, West Rajasthan and East Rajasthan.
  - **Central India:** West Madhya Pradesh, East Madhya Pradesh, Vidarbha and Chhattisgarh.
  - **East India:** Bihar, Jharkhand, Sub-Himalayan West Bengal & Sikkim; Gangetic West Bengal, Odisha and Andaman & Nicobar Islands.
  - **Northeast India:** Arunachal Pradesh, Assam & Meghalaya and Nagaland, Manipur, Mizoram & Tripura.
  - **West India:** Gujarat Region, Saurashtra & Kutch, Konkan & Goa, Madhya Maharashtra and Marathawada.
  - **South India:** Coastal Andhra Pradesh & Yanam, Telangana, Rayalaseema, Coastal Karnataka, North Interior Karnataka, South Interior Karnataka, Kerala & Mahe, Tamil Nadu, Puducherry & Karaikal and Lakshadweep.



## LEGENDS

1. अंडमान और निकोबार द्वीपसमूह

2. अरुणाचल प्रदेश

3. असम और मेघालय

4. नागालैंड, मणिपुर, मिजोरम और त्रिपुरा

5. उप-हिमालयी पश्चिम बंगाल और सिक्किम

6. गंगीय पश्चिम बंगाल

7. ओडिशा

8. झारखंड

9. बिहार

10. पूर्वी उत्तर प्रदेश

11. पश्चिम उत्तर प्रदेश

12. उत्तराखंड

13. हरियाणा, चंडीगढ़ और दिल्ली

14. पंजाब

15. हिमाचल प्रदेश

16. जम्मू और कश्मीर और लद्दाख

17. पश्चिम राजस्थान

18. पूर्वी राजस्थान

19. पश्चिम मध्य प्रदेश

20. पूर्वी मध्य प्रदेश

21. गुजरात

22. सौराष्ट्र

23. कोंकण और गोवा

24. मध्य महाराष्ट्र

25. मराठवाड़ा

26. विदर्भ

27. छत्तीसगढ़

28. तटीय आंध्र प्रदेश और यनम

29. तेलंगाना

30. रायलसीमा

31. तमिलनाडु, पुडुचेरी और कराईकल

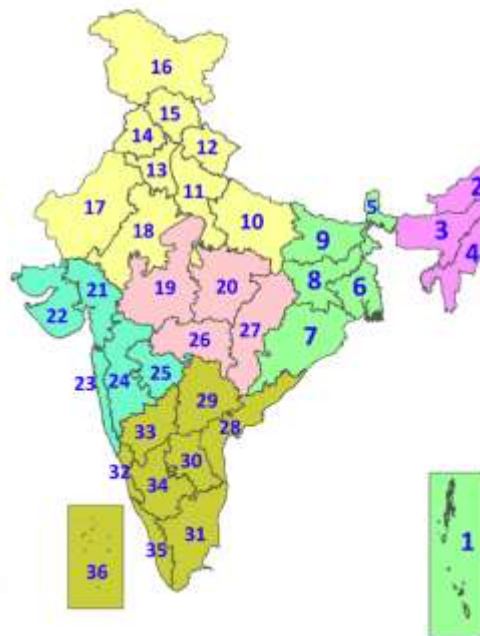
32. तटीय कर्नाटक

33. आंतरिक उत्तरी कर्नाटक

34. आंतरिक दक्षिणी कर्नाटक

35. केरल और माहे

36. लक्षद्वीप



1. Andaman & Nicobar Islands

2. Arunachal Pradesh

3. Assam & Meghalaya

4. Nagaland, Manipur, Mizoram & Tripura

5. Sub-Himalayan West Bengal & Sikkim

6. Gangetic West Bengal

7. Odisha

8. Jharkhand

9. Bihar

10. East Uttar Pradesh

11. West Uttar Pradesh

12. Uttarakhand

13. Haryana, Chandigarh & Delhi

14. Punjab

15. Himachal Pradesh

16. Jammu & Kashmir and Ladakh

17. West Rajasthan

18. East Rajasthan

19. West Madhya Pradesh

20. East Madhya Pradesh

21. Gujarat

22. Saurashtra

23. Konkan & Goa

24. Madhya Maharashtra

25. Marathwada

26. Vidarbha

27. Chhattisgarh

28. Coastal Andhra Pradesh & Yanam

29. Telangana

30. Rayalaseema

31. Tamilnadu, Puducherry & Karaikal

32. Coastal Karnataka

33. North Interior Karnataka

34. South Interior Karnataka

35. Kerala & Mahe

36. Lakshadweep

## SPATIAL DISTRIBUTION (% of Stations reporting)

% Stations	Category	% Stations	Category
76-100	Widespread (WS/Most Places)	26-50	Scattered (SCT/A Few Places)
51-75	Fairly Widespread (FWS/Many Places)	1-25	Isolated (ISOL)



Fog



Heavy Snow



Cold Wave



Heavy Rain



Dust Storm



Cold Day



Very Heavy Rain



Heat Wave



Ground Frost



Extremely Heavy Rain



Warm Night



Thunder & Lightning



Hot Day



Hailstorm



Hot & Humid



Dust Raising Winds



Strong Surface Winds

## COLOUR CODED WARNING

No Warning (No Action)

Watch (Be Aware)

Alert (Be Prepared To Take Action)

Warning (Take Action)

## Probabilistic Forecast

Terms	Probability of Occurrence (%)
Unlikely	< 25
Likely	25 - 50
Very Likely	50 - 75
Most Likely	> 75

\* Red colour warning does not mean "Red Alert", Red colour warning means "Take Action".

Forecast and Warning for any day is valid from 0830 hours IST of day till 0830 hours IST of next day.

For more details, kindly visit <https://mausam.imd.gov.in> or contact: 011-2434-4599

(Service to the Nation since 1875)



## DEFINITION/CRITERIA

### Rain/ Snow \*

Heavy: 64.5 to 115.5 mm/cm \*  
Very Heavy: 115.6 to 204.4 mm/cm \*  
Extremely Heavy: > 204.4 mm/cm \*

### Heat Wave

When maximum temperature of a station reaches  $\geq 40^{\circ}\text{C}$  for plains and  $\geq 30^{\circ}\text{C}$  for hilly regions  
(a) Based on Departure from normal

Heat Wave: Maximum Temperature Departure from normal  $4.5^{\circ}\text{C}$  to  $6.4^{\circ}\text{C}$ .

Severe Heat Wave: Maximum Temperature Departure from normal  $\geq 6.5^{\circ}\text{C}$

(b). Based on Actual maximum temperature

Heat Wave: When actual maximum temperature  $\geq 45^{\circ}\text{C}$ .

Severe Heat Wave: When actual maximum temperature  $\geq 47^{\circ}\text{C}$ .

(c). Criteria for heat wave for coastal stations

When maximum temperature departure is  $> 4.5^{\circ}\text{C}$  from normal. Heat Wave may be described provided maximum temperature  $\geq 37^{\circ}\text{C}$ .

### Warm Night

When maximum temperature remains  $40^{\circ}\text{C}$

Warm Night: When minimum temperature departure  $4.5^{\circ}\text{C}$  to  $6.4^{\circ}\text{C}$ .

Severe Warm Night: When minimum temperature departure  $> 6.4^{\circ}\text{C}$ .

### Cold Wave

When minimum temperature of a station  $\leq 10^{\circ}\text{C}$  for plains and  $\leq 0^{\circ}\text{C}$  for hilly regions.

(a). Based on departure

Cold Wave: Minimum Temperature Departure from normal  $-4.5^{\circ}\text{C}$  to  $-6.4^{\circ}\text{C}$ .

Severe Cold Wave: Minimum Temperature Departure from normal  $\leq -6.5^{\circ}\text{C}$

(b) Based on actual Minimum Temperature (for Plains only)

Cold Wave: When Minimum Temperature is  $\leq 4.0^{\circ}\text{C}$

Severe Cold Wave: When Minimum Temperature is  $\leq 2.0^{\circ}\text{C}$

(c) For Coastal Stations

When Minimum Temperature departure is  $\leq -4.5^{\circ}\text{C}$  & actual Minimum Temperature is  $\leq 15^{\circ}\text{C}$

### Cold Day

When minimum temperature of a station  $\leq 10^{\circ}\text{C}$  for plains and  $\leq 0^{\circ}\text{C}$  for hilly regions

Based on departure

Cold Day: Maximum Temperature Departure from normal  $-4.5^{\circ}\text{C}$  to  $-6.4^{\circ}\text{C}$ .

Severe Cold Day: Maximum Temperature Departure from normal  $\leq -6.5^{\circ}\text{C}$

### Fog

Phenomenon of small droplets suspended in air and the horizontal visibility  $< 1\text{km}$

Moderate Fog: When the visibility between 500-200 metres

Dense Fog: when the visibility between 50- 200 metres

Very Dense Fog: when the visibility  $< 50$  metres

### Thunderstorm

Sudden electrical discharges manifested by a flash of light (Lightning) and a sharp rumbling sound (thunder)

### Dust/Sand Storm

An ensemble of particles of dust or sand energetically lifted to great heights by a strong and turbulent wind.

### Frost

Ice deposits on ground

Air temperature  $\leq 4^{\circ}\text{C}$  ( over Plains)

### Squall

A strong wind that rises suddenly, lasts for atleast 1 minute.

Moderate: Wind speed 52-61 kmph

Severe: Wind speed 62-67 kmph

Very Severe: Wind speed  $> 67$  kmph

### Sea State

Effect of various waves in the sea over specific area

Rough to very rough: Wind speed 41-62 kmph (22-33 knots) & Wave height 2.5-6 metre

High to very high: Wind speed 63-117 kmph ( 34-63 knots) & Wave height 6-14 metre

Phenomenal: Wind speed  $> 117$  kmph ( $> 63$  knots) & Wave height  $> 14$  metre

### Cyclone

Cyclonic Storm: Wind speed 62-87 kmph (34-47 knots)

Severe Cyclonic Storm: Wind speed 88-117 kmph (48-63 knots)

Very Severe Cyclonic Storm: Wind speed 118-165 kmph (64 - 89 knots)

Extremely Severe Cyclonic Storm: Wind speed 166-220 kmph (90 -119 knots)

Super Cyclone Storm: Wind speed  $> 220$  kmph ( $> 119$  knots)

\* Red colour warning does not mean "Red Alert", Red colour warning means "Take Action".

Forecast and Warning for any day is valid from 0830 hours IST of day till 0830 hours IST of next day.

For more details, kindly visit <https://mausam.imd.gov.in> or contact: 011-2434-4599

(Service to the Nation since 1875)

**Hot and Humid:** When maximum temperatures remain  $3^{\circ}\text{C}$  above normal along with the above normal relative humidity.